

EDITABLE NESTED FIELDS IN WRITER



Michael Stahl, CIB labs GmbH

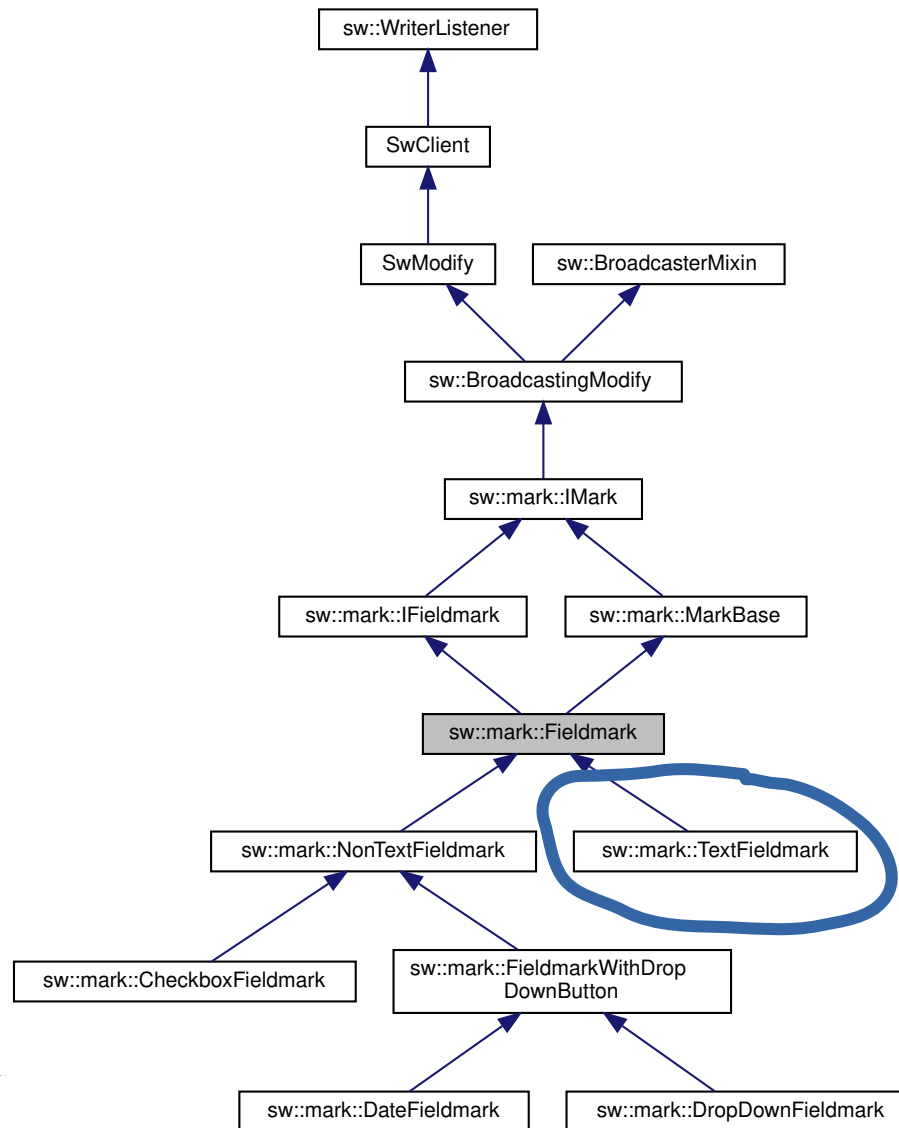
2020-10-15



- Writer fields
 - a magic character inside a paragraph in the document model
 - simple mechanism to generate a bit of text
- Word fields
 - field instruction + field result
 - both user editable rich text
 - used for lots of things, e.g. indexes

- added to OOo > 10 years ago
- representation of Word fields in Writer model, as a kind of bookmark
- Text fieldmark:
 - 2 dummy characters, with instruction as string property
 - can't actually represent Word fields

Class hierarchy



Fixing that...

- added 3rd dummy character CH_TXT_ATR_FIELDSEP
 - can now nest fields in field instruction
- keep fieldmarks consistent when editing (overlapping selections)
- working Undo/Redo
- removed some defensive programming, deployed some asserts
 - lots of bugs fixed
 - [control characters inserted as text]
- Office::Common::Filter::Microsoft::Import::ForceImportWWFieldsAsGenericFields mode to suppress converting Word fields to Writer fields in RTF/DOCX import

Example nested field

The image displays two screenshots of the LibreOffice Writer interface, illustrating the process of extracting nested fields from a text document.

Top Screenshot (Original Document): The document content is as follows:

```
{ QUOTE "foo  
{ QUOTE "foo  
bar  
baz" }  
bar  
baz" }
```

Bottom Screenshot (Extracted Fields): The document content is as follows:

```
.QUOTE.."foo¶  
{ QUOTE.."foo¶  
bar¶  
baz"foo¶  
.bar¶  
baz¶  
bar¶  
baz"foo¶  
.foo¶  
.bar¶  
baz¶  
bar¶  
baz¶  
¶
```

Future Work

- hide the field instruction (or result) in the document view
- expand the field instruction into a new result (far future...)

CIB

IDEEN MIT SYSTEM



OUR PRODUCTS:

<https://libreoffice.cib.de>